

# LEON COUNTY SCHOOLS

PRESENTS

## A Night of Celebration

“Recognizing Our Stars While Social Distancing”

HONORING OUR

GLENN-HOWELL DISTINGUISHED EDUCATOR OF THE YEAR,

SCHOOL RELATED EMPLOYEE OF THE YEAR, TEACHER OF THE YEAR, AND 2019-2020 RETIREES



**Sheila Rains**

SABAL PALM ELEMENTARY SCHOOL  
School Related  
Employee of the Year



**Dr. Jasmine Smith**

OAK RIDGE ELEMENTARY SCHOOL  
Glenn-Howell Distinguished  
Educator of the Year



**Trikia White**

AUGUSTA RAA MIDDLE SCHOOL  
Teacher of the Year

## 2020 VIRTUAL CELEBRATION OF OUR OUTSTANDING EMPLOYEES



6:00 PM

Thursday, June 4, 2020



# *Congratulations to our Stars*

School Related Employees of the Year  
Glenn-Howell Distinguished Educators of the Year  
Teachers of the Year  
LCS Retirees

# *Thank you for an Outstanding Job*



Rocky Hanna  
Superintendent

2757 West Pensacola Street • Tallahassee, Florida 32304-2998 • Phone (850) 487-7110 • Fax (850) 414-5194  
[www.leonschools.net](http://www.leonschools.net) • [www.facebook.com/leonschools](https://www.facebook.com/leonschools) • [www.instagram.com/leoncountyschools](https://www.instagram.com/leoncountyschools)

**Building the Future Together**



# Award History

## Glenn-Howell Distinguished Educator of the Year

This award is named for Devurn Glenn, Ph.D. and Aquilina C. Howell, both retired educators. Dr. Glenn for whom the *Devurn Glenn District Office Complex* at 2757 W. Pensacola Street is named, was a classroom teacher, school-level administrator and District-level administrator. He served as the first African American Assistant Superintendent of Schools for Personnel for the Leon County School District. Mrs. Howell, "Aquilina" as she was affectionately called and for whom the Aquilina C. Howell Instructional Service Center at 3955 W. Pensacola Street is named, was a classroom teacher and guidance counselor. She held District-level positions as supervisor of guidance, secondary education supervisor, and director of secondary education. She was appointed the first female African American Assistant Superintendent of Schools for Instruction for the Leon County School District. During their careers, both of these fine educators touched the lives of thousands of young people and adults alike. They were faithful, committed, and dedicated to serving this school District and the greater Tallahassee community. This District is pleased to recognize them as outstanding role models. Mrs. Howell passed away on January 21, 2000.

For many years, the Florida Department of Education conducted the Ida S. Baker Distinguished Minority Educator Award as a statewide recognition. When it was discontinued in the late 1990s, then-Superintendent William J. Montford felt it important to continue this process as a local recognition supported by the Leon County School District. The founding chairperson of this award was Dr. Malinda W. Jackson-James.

## School Related Employee of the Year

This program recognizes outstanding education support personnel for the significant contributions they make to their schools and district school systems. The program honors one state representative and four finalists. In accordance with Florida Statute section 1012.21(5), the Florida Department of Education provides coordination and technical assistance in the nomination, selection, and recognition processes.

Nomination packets are sent to district superintendents at the beginning of each school year. Selection processes may differ by district. Only one nomination may be submitted by a district to the state and only the superintendent may make the nomination.

All non-certified, non-instructional educational support personnel who serve at the school or district level (such as teacher aides, library aides, bookkeepers, secretaries and clerks, bus drivers, food service staff, custodians, building maintenance workers, warehouse workers, mechanics, nurses, and office managers) may be nominated. Nominees may be full-time or part-time employees. Instructional and administrative personnel as defined in Section 1012.01(2) (a) – (d) and (3). Certified administrative staff and contract employees are not eligible.

## Teacher of the Year

The Leon County Schools Teacher of the Year recognition program has been in place since 1968. For 52 years we have been honoring one teacher that represents the best of what teaching is all about. This program recognizes and honors the contributions of outstanding classroom teachers who have demonstrated a superior capacity to inspire a love of learning in students of all backgrounds and abilities. Each year, individual schools across the District honor one of their teachers as the school's Teacher of the Year. These teachers are entered into the Leon County Schools Teacher of the Year program. The top five teachers in the District are then interviewed by a District-based committee composed of past Teachers of the Year, District administrators, parent leaders and community members who select the winner. Leon County Schools has more than 2,000 teachers and its highest honor is to be named Teacher of the Year.

**Program**  
**2020 Night of Celebration**

Dr. Michelle Gayle, Presiding

Musical Prelude .....

Greetings ..... *Ms. DeeDee Rasmussen*, Chair  
Leon County School Board

*Mr. Rocky Hanna*, Superintendent  
Leon County Schools

Thought for the Day ..... *Mr. Apurva Srivastava*,  
Student School Board Member  
James S. Rickards High School

Envision Credit Union Presentation ..... *Mr. Darryl Worrell*,  
President/CEO

Finalist Recognitions ..... *Dr. T. Alan Cox*, Assistant Superintendent  
School Management Services

Glenn-Howell Educator of the Year  
School Related Employee of the Year  
Teacher of the Year

District Winners Recognitions ..... *Dr. Michelle Gayle*, Assistant Superintendent  
Professional and Community Services

Glenn-Howell Educator of the Year  
School Related Employee of the Year  
Teacher of the Year

Award Recognitions ..... *Dr. T. Alan Cox*, Assistant Superintendent  
School Management Services

*Mrs. Sue Kraul*, Director  
Elementary Schools

**School Sites A – F**

Glenn-Howell Educator of the Year  
2019-2020 Retirees  
School Related Employee of the Year  
Teacher of the Year

Special Presentations ..... *Ms. Calla McNamara*, FSU Opening Nights

**School Sites G-N**

Glenn-Howell Educator of the Year  
2019-2020 Retirees  
School Related Employee of the Year  
Teacher of the Year

Special Presentations ..... *Mr. Raphael Vazquez*, Owner/Operator  
JV & Sons, Inc., McDonald's

**School Sites O-Z**

Glenn-Howell Educator of the Year  
2019-2020 Retirees  
School Related Employee of the Year  
Teacher of the Year

*Dr. Michelle Gayle*, Assistant Superintendent  
Professional and Community Services

Closing Remarks ..... *Mr. Rocky Hanna*, Superintendent  
Leon County Schools



WE  
WANT  
TO

thank

*Teachers* for your amazing work this year and support of LCTA,

*The District and Administrators* for working with LCTA to better all, and to

*Honorees and Retirees* - congratulations for your hard work and dedication this year, and every year!

Sincerely,  
*Leon Classroom Teachers Association*

[www.leonteachers.org](http://www.leonteachers.org)



# OPENING NIGHTS

at FLORIDA STATE UNIVERSITY

is proud to partner with Leon County Schools  
to enhance the arts in the classroom

[openingnights.fsu.edu](http://openingnights.fsu.edu)





**THANK YOU**  
**TEACHERS, FACULTY, STAFF & RETIREES**  
**FOR HELPING KEEP LEON COUNTY SCHOOLS**  
**"WORLD CLASS"**

WORLD CLASS  SCHOOLS  
A PROGRAM OF THE GREATER TALLAHASSEE CHAMBER OF COMMERCE



**A B C**

**CONGRATULATIONS**  
**Teachers, Support Staff**  
**and Retirees**

**WE RECOGNIZE YOUR**  
**HARD WORK AND DEDICATION.**  
**THANKS FOR ALL**  
**YOU'VE DONE.**



From the 2020 Night Of Celebration Planning Committee

# Lowest Prepaid Plan Prices in Five Years



## Open Enrollment Ends May 31, 2020.

Join the 27,000 families who have started saving for college so far this year

- Florida Prepaid College Plans start at just \$54 a month for a Kindergartner, the lowest price in five years!
- Prepaid Plan payments are being deferred until July 20, 2020 for new and current customers.
- Prepaid Plans offer a secure, guaranteed way to save for college.

Visit our online pricing calculator to learn what the various Prepaid Plans cost based on your child's age and explore the different payment options available.

Even as we cope with the challenges of today, we encourage Florida families to take comfort in knowing that Prepaid College Plans offer certainty and security for college savings.

➤ **Open Enrollment ends May 31, 2020.**

**Use promo code LEON1920 to save \$50 on your enrollment fee.**

Simply visit [myfloridaprepaid.com](http://myfloridaprepaid.com) to fill out a quick online application that can be completed in as little as 15 minutes, or call us a **1-800-552-GRAD (4723)**.



**2020 GLENN-HOWELL  
DISTINGUISHED EDUCATOR OF THE YEAR**

**Dr. Jasmine Smith**  
**OAK RIDGE ELEMENTARY SCHOOL**  
Sue Kraul, Director





# Oak Ridge Elementary School

*Home of the Soaring Eagles*

4530 Shelfer Road ♦ Tallahassee, Florida 32305 ♦ 850-488-3124

Dr. Jasmine Smith, Principal

Terri Martin, Assistant Principal

February 4, 2020

Dear Members of the Glenn-Howell Distinguished Educator Committee:

As the Assistant Principal of Oak Ridge Elementary School, I have had the opportunity to work with Dr. Jasmine Smith, our Principal, for the past year. The first word that comes to mind when I think of Dr. Smith is determination. In all aspects of the school, she is determined to do her absolute best to ensure we excel.

For our students, Dr. Smith continuously motivates them to excel through her positive interactions with them each day. She reminds teachers, staff, and parents that our students can, and will, rise to excellence. Dr. Smith has created events such as the V.I.P Party to encourage excellence in academics, and she has been the driving force behind activities that offer our students positive school experiences. From our Snow Day where students played in real snow and participated in STEM activities to our Polar Express Night where students took a train to the North Pole and joined family members in literacy activities, Dr. Smith has been determined to offer our students a positive and enriching school experience.

When Dr. Smith first arrived at Oak Ridge Elementary, she was determined to build a positive school culture for staff, students, and families. She has focused on building leaders in our school and on creating a spirit of collaboration among the faculty. With her assistance and guidance, the teachers and staff work together to review data regularly to determine the instructional learning path for our students. Through Dr. Smith's leadership, Oak Ridge moved from a school grade of D to a C in 2019, and we look forward to continuous improvement in the upcoming years.

Dr. Jasmine Smith's determination to lead our students to excellence makes her an outstanding nominee for the Glenn-Howell Distinguished Educator of the Year. She continues to make a difference in the lives of students, and is a role model for not only me, but also the teachers and staff members she works with each day.

Sincerely,

Terri Martin  
Assistant Principal

**2020 GLENN-HOWELL DISTINGUISHED  
EDUCATOR OF THE YEAR - FINALISTS**



Kimberly Sherman  
Astoria Park Elementary School



Mary Jo Peltier  
Frank Hartsfield Elementary School



Wendy Chan  
Amos P. Godby High School



Dr. Benny Bolden, Jr.  
R. Frank Nims Middle School



**2020 SCHOOL RELATED  
EMPLOYEE OF THE YEAR**

**SHEILA RAINS**

**SABAL PALM ELEMENTARY SCHOOL**

Anicia Robinson, Principal



# Sabal Palm Elementary at Dale Mabry Field Technology and Robotics Magnet School

2813 Ridgeway Street  
Tallahassee FL 32310  
(850) 488-0167 (850) 922-8481 fax  
www.sabalpalm.leon.k12.fl.us



**Anicia Robinson**  
Principal

**Shannon Davis**  
Assistant Principal

**Rocky Hanna**  
Superintendent

January 9, 2020

Dear Nominating Committee,

It is my pleasure to nominate Mrs. Sheila Rains as Sabal Palm's School Related Employee of the Year. Mrs. Rains is a deserving recipient of this nomination for the 2019-2020 school year.

Mrs. Sheila Rains has gone above and beyond the call of duty. Not only has she been an integral part of the successful learning gains that we can acquire in ELA, but she has volunteered to step in and teach 5<sup>th</sup> grade ELA until we have secured a 5<sup>th</sup> grade teacher. She has taken it upon herself to take the teaching certification exams and go through professional development to truly be a part of the 5<sup>th</sup> grade ELA department.

Mrs. Rains has assisted over the years with reading interventions, which has helped us produce the highest learning gains in the school district for the 2018-2019 school year. Sabal Palm lowest 25% readers as well as all the interventions for Language Arts helped our school to achieve 72% of learning gains. She single worked with all the 4<sup>th</sup> and 5<sup>th</sup> grade reading and math intervention students in the school. Her ability to get students to move to higher levels is unmatched. Mrs. Rains' willingness to take on task, make them her own and master curriculum is second to none. She takes our iReady curriculum and brings it to life by having students develop a visual of what they are reading to be able to allow them to master the state standards.

Mrs. Rains also shares her talents by working with our afterschool Dance chance team by being a co-sponsor. She works with the Tallahassee Ballet, their school based instructor and her colleague, to make sure that they students are prepared for their end of the year recital. Mrs. Rains makes their end of the season costumes and allows our students' personalities to shine while they are performing.

Sabal Palm Elementary School would not be the same without Mrs. Sheila Rains. Not only has she become an integral part of the 5<sup>th</sup> grade teaching team, but she is an important member of the Patriot Family.

Sincerely,

  
Anicia R. Robinson  
Principal

*"The Leon County School District does not discriminate against any person on the basis of race, color, national origin, sex (including transgender, gender nonconforming status, sexual orientation and diverse gender identities) marital status, age, ethnicity, religion, military status, pregnancy, disability or genetic information."*

**2020 SCHOOL RELATED  
EMPLOYEE OF THE YEAR - FINALISTS**



Linda Sessions  
Astoria Park Elementary School



Henrietta Pieszchala  
Gretchen Everhart School



Kathleen Pester  
Killearn Lakes Elementary School



Daisy Smith  
John G. Riley Elementary School

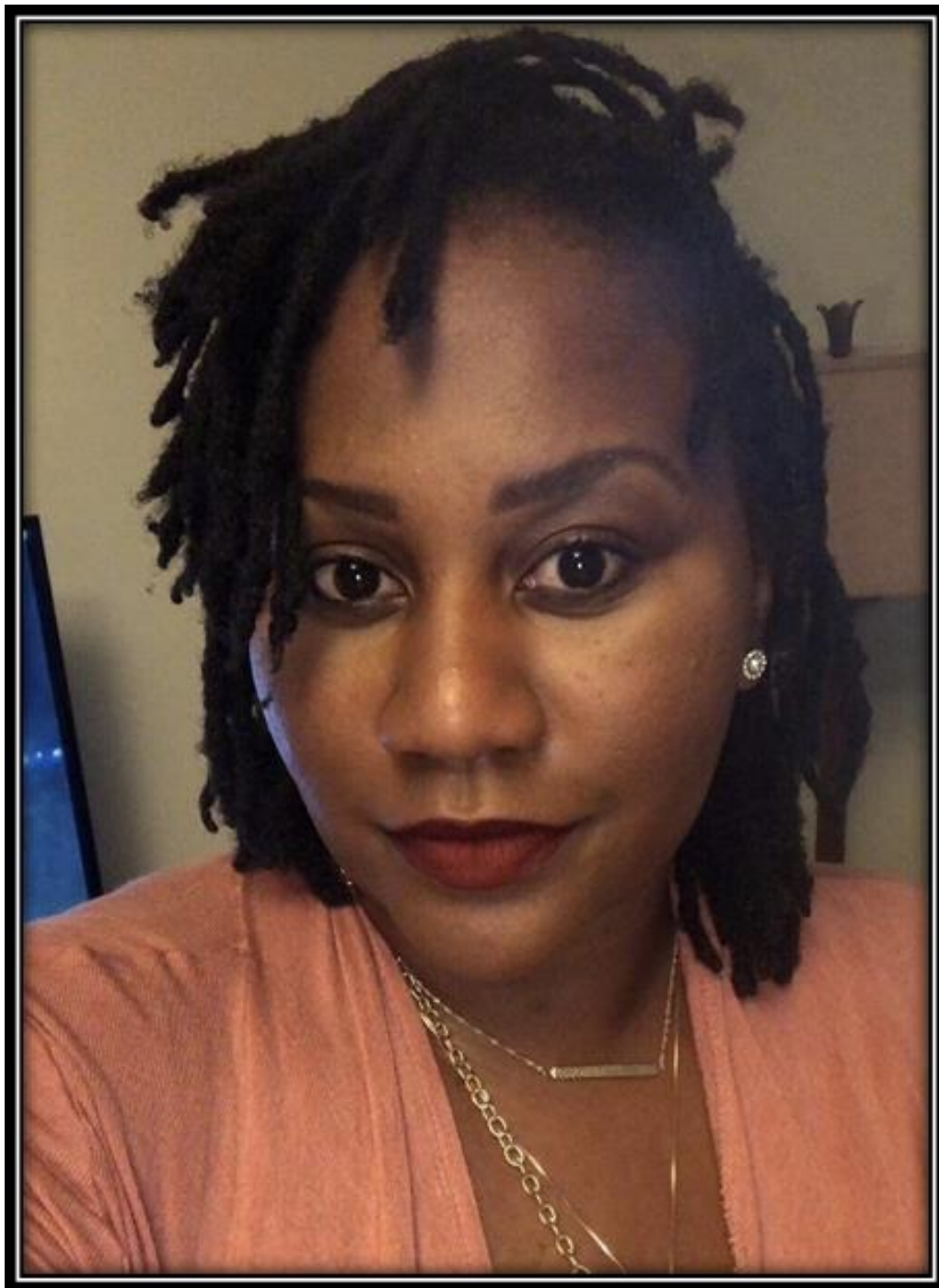


**2020 TEACHER OF THE YEAR**

**TRIKIA WHITE**

**AUGUSTA RAA MIDDLE SCHOOL**

Dr. Chris Small, Principal



# Augusta Raa Middle School – Home of the Rams

Dr. Small, Principal  
Mr. Cowart, Asst. Principal  
Mrs. Van Camp, Asst. Principal  
Mr. Thompson, Dean



401 W. Tharpe Street, Tallahassee, FL 32303  
Tel: (850) 488-6287 Fax: (850) 922-5835  
Website: [www.leonschools.net/raa](http://www.leonschools.net/raa)

Dear Selection Committee:

It is with pleasure that I write this letter of recommendation for Ms. Trikia White as the 2019-20 Leon County Schools Teacher of the Year. I have had the opportunity to observe and work with Ms. White over the course of the past three school years as the principal at Raa Middle School. Ms. White is a hard worker who is dedicated to performing and perfecting her craft as an educator. She has worked diligently this year as our Reading Coach, 8<sup>th</sup> Grade Team Leader, and a Language Arts Teacher. She is the type of teacher that makes every day of learning a full student-centered production from the time students walk through the door. It is not uncommon for me to walk into her classroom to find her simultaneously facilitating a small group lesson while having a one-on-one dialog with a student about their performance data, and also reassuring students working independently of their ability to succeed. She often kicks-off each unit or lesson with interesting facts and stories to spark dialog with her students and make practical connections to their background knowledge.

Moreover, this year Ms. White took on the task of becoming our Reading Coach. Adding this type of responsibility to a full-time teaching schedule and commitments to serve as the leader of our 8<sup>th</sup> Grade Team was no easy ask, but she has risen to the challenge like a champion and has been respected by her colleagues as a vital source of information and practical experience. She has worked this year to revamp our school-wide implantation of reading intervention programs, spearheaded a before school computer lab and remediation schedule, and organized a co-teaching framework that has allowed her to utilize her knowledge of reading strategies to benefit our content area teachers on interdisciplinary planning and instruction.

Ms. White has also served as a district trainer and instructor for Foundations of Language and Cognition Reading Endorsement Course. She has a heart for not only ensuring that students are equipped for success and have equitable access to needed information, but she also works to ensure that the quality of our instructional staff is as strong as possible. From helping to orchestrate school-wide PBIS celebrations for students without discipline referrals to developing ways of work and diverse strategies to assist students with benchmark mastery for earning quality points, Ms. White is no stranger to finding solutions that build character and success in our students. In short, Ms. White is a teacher who leads by example and has never lowered the bar for herself in order to achieve excellence. Furthermore, she is an advocate for struggling youth and has used her knowledge and training pertaining to meeting all students needs to enhance the learning process for all students she comes in contact with. This is evident in her consecutive years of student performance scores that have topped the charts even when tasked with serving our below grade level readers.

I am excited about the opportunities that have presented themselves before Ms. White this year as a nominee for Leon County Schools Teacher of the Year. I believe she has the energy, knowledge, academic qualifications, administrative experience, and skills to lead and set examples for future school leaders. I look forward to the opportunity to discuss with you more of her potential contributions.

Sincerely,

Dr. Christopher Small  
Proud Principal

*"The Leon County School District does not discriminate against any person on the basis of sex (including transgender status, gender nonconforming, and gender identity), marital status, sexual orientation, race, religion, ethnicity, national origin, age, color, pregnancy, disability, or genetic information."*



## 2020 TEACHER OF THE YEAR - FINALISTS



Sherry M. Lawrance  
Killearn Lakes Elementary School



Josh Stewart  
Leon High School



Joyce Madsen  
William J. Montford, III Middle School



LeeAnn Hewitt  
Springwood Elementary School



# 2019-2020 HONOREES

## Adult and Community Education

*Regina Browning*, Principal  
Heather Beasley, SRE  
Regina Browning, GH  
Charles Greenwell, Retiree  
Travis Jones, TOY

## Apalachee Tapestry Magnet School of the Arts

*Jennifer Ricardo*, Principal  
Sharon Bradwell, SRE  
Russell Gardner, Retiree  
Shayla Lightfoot-Brown, GH  
Kimberly McKiernan, TOY

## Astoria Park Elementary School

*David Solz*, Principal  
Lenore Locascio, Retiree  
Beth Ray, TOY  
Linda Sessions, SRE - **Finalist**  
Kimberly Sherman, GH - **Finalist**

## Bond Elementary School

*Delshauna Jackson*, Principal  
Alice Bates, Retiree  
Andre Farquharson, SRE  
Shenita Grayson, TOY  
Marlene Mio, Retiree  
Marion Phillips, Retiree  
Kerrian Washington, GH

## Buck Lake Elementary School

*Billy Millard*, Principal  
Candace Duclos, TOY  
Patricia LaPete, Retiree  
Gregory McNair, SRE  
Brenda Olschlager, GH

## Canopy Oaks Elementary School

*Paul Lambert*, Principal  
Jake Harai, GH  
Patricia Hooper, Retiree  
Laura Joanos, Retiree  
Tracy Malone, SRE  
Holly Pursino, TOY  
Debra Raze, Retiree

## Chaires Elementary School

*Michele Prescott*, Principal  
Janeen Hall, GH  
Dasmine Henderson, SRE  
Nancy Long, TOY  
Julianne Thompson, Retiree

## Chiles High School

*Joe Burgess*, Principal  
Renaldo Davis, GH  
James Sparrazza, Retiree  
Paige Tekel, TOY  
Jeanne Tucker, Retiree  
Lamont Williams, SRE

## Cobb Middle School

*Sarah Hembree*, Principal  
Cynthia Osborne, TOY  
Casey Yu, GH

## Conley Elementary School at SouthWood

*Jason Koerner*, Principal  
Elizabeth Calhoun, GH  
Meghan Dawkins, TOY  
Pam Jameson, Retiree  
Joia Jefferson, SRE

# 2019-2020 HONOREES

## Deerlake Middle School

*Steve Mills*, Principal  
Bobby Angry, GH  
Amber Floyd, SRE  
J. Travis Lightfoot, TOY  
Paula Miller, Retiree  
Susan Snyder, Retiree  
Barbara Watkins, Retiree

## DeSoto Trail Elementary School

*Michele Keltner*, Principal  
Janet Childers, TOY  
Tonya Davis, SRE  
Peter Marti, GH

## Early Childhood Programs

*Brooke Brunner*, Director  
Gwynn Butler, Retiree  
Barbara Cherry, Retiree

## Exceptional Student Education

*Dr. T. Alan Cox*, Asst. Superintendent  
Connie Haverty, Retiree

## Facilities

*Danny Allbritton*, Director  
Caron Grow, Retiree

## Fairview Middle School

*Rusty Edwards*, Principal  
Lee Cameron, TOY  
George Eckerle, Retiree  
Martha Kisiah, Retiree  
Richard Kitchen, Retiree  
Nancy Narvaez-Garcia, GH  
Alvin White, SRE

## FDLRS

*Eydie Tricquet*, Director  
Robin Petrick, Retiree  
Elizabeth Williams, Retiree

## Financial Services

*Kim Banks*, CFO  
Janice Wonsch, Retiree

## Fort Braden (K-8) School

*Jimbo Jackson*, Principal  
Katie Bennett, TOY  
Michele Pletch, GH  
Karen Willett, SRE

## Gilchrist Elementary School

*Scotty Crowe*, Principal  
Rachel Cannady, SRE  
Mary Chapman, Retiree  
George Edwards, Jr, Retiree  
Geenel Moore, GH  
Allison Richards, TOY

## Godby High School

*Desmond Cole*, Principal  
Susan Barrineau, TOY  
Wendy Chan, GH - **Finalist**  
Brownell Ellis, Retiree  
Kathryn Thomas, SRE

## Gretchen Everhart School

*Jane Floyd-Bullen*, Principal  
Latoya Montgomery, GH  
Henrietta Pieszchala, SRE - **Finalist**  
Jacklyn Pittman, Retiree  
Brenda Rice, TOY

## Griffin Middle School

*Zelena O'Banner*, Principal  
Marilyn Bently-Carter, Retiree  
Ronald Lang, Retiree  
Nikki Nicolas, TOY  
Lester Thomas, SRE  
Sandra Wilkerson, GH

# 2019-2020 HONOREES

## Frank Hartsfield Elementary School

*Dr. Rhonda Flanagan*, Principal  
Wendy Davis, Retiree  
Tyrone Givens, Retiree  
Tasha Jackson, SRE  
Erica Jenkins, TOY  
Robin Krause, Retiree  
Mary Jo Peltier, GH - **Finalist**

## Hawks Rise Elementary School

*Evy Friend*, Principal  
Debra Dawson, Retiree  
Arlene Drye, Retiree  
Evelyn Friend, Retiree  
Eddie Golden, Retiree  
Barry Hoff, SRE  
Brittany Hutto, TOY  
Shacoby Ingram, GH  
Maryanne Smiley, Retiree

## Heritage Trails Community School

*Amy Alvis*, Site Administrator  
Brittany Ford, SRE  
Moses Johnson, TOY  
Fedrick Mondelus, GH

## Human Resources

*Deana McAllister*, Asst. Superintendent  
Sue Christie, Retiree  
Carmelesa Crosby-Harley, Retiree

## Kate Sullivan Elementary School

*Michael Bryan*, Principal  
Tina Davis, Retiree  
Gia Gallon, GH  
Caitlyn Maloney, TOY  
Donna Mann, Retiree  
Brandon Wallace, SRE

## Killearn Lakes Elementary School

*Brenda Wagner*, Principal  
Gregory Brown, Retiree  
Sherri Brown, Retiree  
Sherry M. Lawrance, TOY - **Finalist**  
Karen Parsons, Retiree  
Kathleen Pester, SRE - **Finalist**  
Kathy Preston, Retiree  
Tameka Rumph, GH

## Leon County Virtual School

*Jessica Lowe*, Principal  
Freda Jackson, SRE  
Marie Pujols, Lopez, TOY  
Kelly Pagan, GH

## Leon High School

*Billy Epting*, Principal  
Laurice Anderson, Retiree  
Kenneth Brown, Retiree  
Matthew Guyton, Retiree  
Elaine Nicoloso, Retiree  
Arthur Skelly, Jr, Retiree  
Josh Stewart, TOY - **Finalist**

## Lincoln High School

*Dr. Allen Burch*, Principal  
Scott Blanche, Retiree  
Lance Lee, Retiree  
Melissa Melnicoff, GH  
Virginia Orsillo, TOY  
Mica Walker, SRE

## Lively Technical College

*Shelly Bell*, Director  
Jason Belcher, GH  
Jeanette Brewers, Retiree  
Randy Free, Retiree  
Patti Mailhot, TOY  
Curtis Richardson, Retiree  
James Strickland Jr., SRE



# 2019-2020 HONOREES

## Maintenance

*Butch Watkins*, Director  
John Charles, Retiree  
George Gleaton, Retiree  
Walter Mickens, Retiree  
Michael Rines, Retiree  
William Roberts, Retiree

## Montford Middle School

*Lewis Blessing*, Principal  
Amber Kristian, SRE  
Joyce Madsen, TOY - **Finalist**  
Whitney Usina, GH

## R. Frank Nims Middle School

*Dr. Benny Bolden*, Principal  
Benny Bolden, GH - **Finalist**  
Kelsey Boyer, TOY  
Elizabeth Graham, Retiree  
James Love, Retiree  
Timothy Williams, SRE

## Oak Ridge Elementary School

*Dr. Jasmine Smith*, Principal  
Tyrice Earl, SRE  
Dwanna Moore, TOY  
Jasmine Smith, GH - **Winner**

## Pineview Elementary School

*Carmen Conner*, Principal  
Mary Baker, Retiree  
Joni Hartsfield, Retiree  
Margie Harvey, Retiree  
Karlisa Johnson, TOY  
Tracy Nash, GH  
Shawnchine Tinson, SRE

## Augusta Raa Middle School

*Dr. Christopher Small*, Principal  
Derrick Marin Jr., GH  
Robbin Paul, SRE  
Triki White, TOY - **Winner**  
Elie Williams, Jr, Retiree

## Rickards High School

*Doug Cook*, Principal  
Samuel Hayes, Retiree  
Jacquelyn Henderson, Retiree  
Robert McBride, GH  
Gregory Perkins, SRE  
Roosevelt Sea, TOY

## Riley Elementary School

*April Knight*, Principal  
Cherdwontreze Daniels, GH  
April Hill, TOY  
Daisy Smith, SRE - **Finalist**

## Risk Management

Janet Heath, Retiree

## Roberts Elementary School

*Kim McFarland*, Principal  
Angeleen Harry, TOY  
Deitra Kemmer, Retiree  
Erma Sever, GH  
Felicia Wilson, SRE

## Ruediger Elementary School

*Sally Stephens*, Principal  
Amanda Atkins, GH  
Catherine Johnson, SRE  
Caitlyn Payberg, TOY  
Thomas Rollins, Retiree

## Sabal Palm Elementary School

*Anicia Robinson*, Principal  
Tamika Brown, GH  
Sheila Rains, SRE - **Winner**  
Valerie Ramos, TOY  
Judith Volpe, Retiree

## SAIL High School

*Tiffany Williams*, Principal  
Rob Bell, TOY  
Rosa Cefalu, SRE

# 2019-2020 HONOREES

## School Improvement

*Giselle Marsh*, Director  
Zoe Cooper, Retiree

## Sealey Elementary Math and Science Magnet School

*Demetria Clemons*, Principal  
Rachel Cassidy, TOY  
Ruth Lyle, Retiree  
Kathleen Morgan-Landing, Retiree  
Jamie Morris, Retiree  
Kathryne Pack, Retiree  
Kelly Thompkins, SRE  
Marlena Wims, GH

## Second Chance @ AMI

*Dr. Kelvin Norton*, Principal  
Orlando Burch, GH  
Robert Crawford, Retiree  
Eugene Hall, GH  
Myra King, SRE  
Rachelle Navarro, Retiree  
Brenda Scott, TOY

## Springwood Elementary School

*Sylvia Myers*, Principal  
Brownie Gilbreath, SRE  
LeeAnn Hewett, TOY - **Finalist**  
Danielle Vaughn, GH

## Success Academy

*Dr. Kelvin Norton*, Principal  
Eva Ashmore, Retiree  
Tina Brown, Retiree  
Rena Brown, SRE  
Deshiba Clay, TOY  
Laura-Nicole Houston, GH  
Roxanne Reilly, Retiree

## Swift Creek Middle School

*Sue Rishell*, Principal  
Kristina Campbell, SRE  
Bryan Howard, TOY  
Kathryn McCoy, Retiree  
Elizabeth Patterson, GH  
Beverly Touchton, Retiree  
Tracey Tripp, Retiree  
Mary Beth Williams, Retiree

## Technology & Information Services

*Bill Nimmons*, Director  
Lee Allen, Retiree  
Michael Fraser, Retiree  
Linda Kinlaw, Retiree

## Transportation

*James Cole*, Interim Director  
Glenn Camp, Retiree  
Julie David, Retiree  
Daisy Jones, Retiree  
Douglas Lundy, Retiree  
Linda Shabazz, Retiree

## W. T. Moore Elementary School

*Kerri Anderson*, Principal  
Cheryl Finkbeiner, TOY  
Shirley Proctor-Paul, GH

## Woodville (K-8) School

*Dr. Lisa Mehr*, Principal  
Hannah Allbritton, SRE  
Virginia Prestia, TOY  
Yvette Thomas, GH

*Thank You to the 2020 Night of Celebration  
Sponsors*

*Premier Sponsor*



**envision**<sup>®</sup>  
c r e d i t u n i o n

Supporting *Education* Since 1954

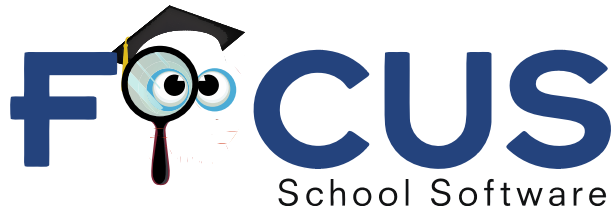
*Executive Sponsors*



**ALLSTATE  
CONSTRUCTION, INC.**  
Building Quality for Life



## Gold Sponsors



FLORIDA STATE UNIVERSITY  
COLLEGE OF EDUCATION

Capital Health  
P L A N<sup>SM</sup>



An Independent Licensee of the Blue Cross and Blue Shield Association

Florida Blue 

## The Gem Collection

3501 Thomasville Road Tallahassee, FL

(850) 893-4171

[www.gemcollection.com](http://www.gemcollection.com)

## Silver Sponsors





# Night of Celebration Committees

## **2020 District Planning Committee Chair**

Dr. Michelle Gayle, Assistant Superintendent, Professional and Community Services

## **2020 School Related Employee Selection Committee Members**

Dr. Kathleen L. Rodgers, Assistant Superintendent, Prevention, Intervention and Equity Services, Committee Chair

Scotty Crowe, Principal – Gilchrist Elementary School

Melanie Garrison, Human Resources

Tyneal Haywood, Assistant Principal – Griffin Middle School

Oronde McKhan, Assistant Principal – Pineview Elementary School

Anthony McQuade, Assistant Principal – Lincoln High School

Bomani Mustapha, Teacher – Hartsfield Elementary School

Michele Prescott, Principal - Chaires Elementary School

## **2020 Glenn-Howell Distinguished Educator Selection Committee Members**

Dr. Kathleen L. Rodgers, Assistant Superintendent, Prevention, Intervention and Equity Services, Committee Chair

Benny Bolden, Principal - R. Frank Nims Middle School

Clayton Cloud, Assistant Principal – Sealey Elementary School

Brian Dobie, Teacher – Springwood Elementary

Sue Kraul, Director - Elementary Schools

Marcus Nicolas, Tallahassee Community College

Dr. Christopher Small, Principal, Augusta Raa Middle School

J.P. Swope, Assistant Principal, Lawton Chiles High School

## **2020 District Teacher of the Year Selection Committee Members**

Dr. Michelle Gayle, Assistant Superintendent, Professional and Community Services

Desmond Cole, Principal – Godby High School

Cheryl Collier-Brown, District Advisory Council - Retired Educator

Scotty Crowe, Principal – Gilchrist Elementary School

Eric Clark, Executive Director – Foundation for Leon County Schools

Jeannine Meis – 2019 Teacher of the Year

Laura Rogers, World Class Schools

Shane Syfrett, LCS – Professional Learning

Kelli Walker, Leon School Volunteer Program

Kelli Walter, Envision Credit Union

Darryl Jones, Leon County School Board Member

Rusty Edwards, Principal – Fairview Middle School

Carol Edwards - Florida state University

Marcus Nicholas - Tallahassee Community College

## **Leon County School Board Members**

DeeDee Rasmussen, Board Chair

Georgia “Joy” Bowen

Darryl Jones

Alva Striplin

Rosanne Wood

Apurva Srivastava, Student Representative



# Celebrating Our Stars While Socially Distancing

## *Keep Shining Bright*

School Related Employees of the Year  
Glenn-Howell Distinguished Educators of the Year  
Teachers of the Year  
LCS Retirees



*Rocky Hanna*  
Superintendent



*DeeDee Rasmussen*  
Board Chair,  
District 4



*Jay Bowen*  
Board Vice-Chair  
District 5



*Alva Striplin*  
District 1



*Rosanne Wood*  
District 2



*Darryl Jones*  
District 3



*Apurva Srivastava*  
Student Member

2757 West Pensacola Street • Tallahassee, Florida 32304-2998 • Phone (850) 487-7110 • Fax (850) 414-5194  
[www.leonschools.net](http://www.leonschools.net) • [www.facebook.com/leonschools](http://www.facebook.com/leonschools) • [www.instagram.com/leoncountyschools](http://www.instagram.com/leoncountyschools)

**Building the Future Together**





*Congratulations to all the  
Finalists and Winners!*

Teacher of the Year

*Trikia White*

Augusta Raa Middle School

School-Related Employee of the Year

*Sheila Rains*

Sabal Palm Elementary School

Glenn-Howell Distinguished Educator of the Year

*Dr. Jasmine Smith*

Oak Ridge Elementary School

**BOARD OF DIRECTORS**

**OFFICERS**

*Mike LePorin*, Chair – Tri-Eagle Sales

*Marie VonHertsenberg*, Chair Elect – Envision Credit Union

*Susan Aarons*, Secretary – Capital City Bank Group

*Mary Estes*, Treasurer - First Commerce Credit Union

*Heather Thomas*, Past Chair – Leon County Schools

**DIRECTORS**

*Barry Blackburn*, Leon County Sheriff's Office

*Lily Etemadi*, Florida Department of Children  
and Families

*Rocky Hanna*, LCS Superintendent

*Tom Harrison*, Tallahassee Primary Care  
Associates

*Christic Henry*, Kingdom First Realty

*Beth Keating*, Gunster Law Firm

*Dan McGrew*, Career Source Capital Region

*Sylvia Myers*, Leon County Schools

*Audra Peoples*, Community Member

*Christie Mason*, CenturyLink

*Brian Welch*, Leon County Schools

*Sean Willett*, Leon Classroom Teachers  
Association

*Justin Wimberly*, American Commerce Bank

*Rosanne Wood*, LCS Board Chair

**EXECUTIVE DIRECTOR**

Eric Clark

Clarke4@leonschools.net

**Proud Partners of:**

Keys to Exceptional Youth Success (KEYS)







# In Loving Memory



**Tonia Reddick**

1973 - 2019

TRANSPORTATION



**Gary Lyda**

1955 - 2019

KILLEARN LAKES ELEMENTARY SCHOOL



**Arlene Henry**

1953 - 2019

NUTRITION SERVICES  
ROBERTS ELEMENTARY SCHOOL



**Josie Jackson**

1954 - 2019

TRANSPORTATION



**Carolyn Hinson**

1957 - 2019

RISK MANAGEMENT



**Ronald Webster**

1956 - 2019

ASTORIA PARK  
ELEMENTARY SCHOOL



**Ronald Miller**

1954 - 2020

MAINTENANCE



**Wilma Willis**

1963 - 2020

NUTRITION SERVICES  
JOHN G. RILEY ELEMENTARY SCHOOL



**Shenita Duhart**

1984 - 2020

TRANSPORTATION

“Then Jonathan said to David, tomorrow is the new moon;  
and thou shall be missed because thy seat will be empty.”

1 Samuel 20:18

**LEON COUNTY SCHOOLS**  
**Night of Celebration**  
**Planning Committee**

**Dr. Michele Gayle, Assistant Superintendent – Chair**  
**Professional and Community Services**

**Sha' Rhonda Brown**  
**Superintendent's Office**

**Jolisa Coffee**  
**School Board Office**

**Julie Jernigan**  
**Technology & Information Services**

**Gillian Jones**  
**Volunteer Programs**

**Susan Mayfield**  
**Video Production**

**Denni Rae**  
**Professional & Community Services**

**Heather Thomas**  
**Professional & Community Services**

**Kelli Walker**  
**Volunteer Programs**



## **Nondiscrimination Notification and Contact Information**

“No person shall on the basis of sex (including transgender, gender nonconforming and gender identity), marital status, sexual orientation, race, religion, ethnicity, national origin, age, color, pregnancy, disability, military status or genetic information be denied employment, receipt of services, access to or participation in school activities or programs if qualified to receive such services, or otherwise be discriminated against or placed in a hostile environment in any educational program or activity including those receiving federal financial assistance, except as provided by law.” No person shall deny equal access or a fair opportunity to meet to, or discriminate against, any group officially affiliated with the Boy Scouts of America, or any other youth group listed in Title 36 of the United States Code as a patriotic society.

An employee, student, parent or applicant alleging discrimination with respect to employment, or any educational program or activity may contact:

Dr. Kathleen L. Rodgers, Assistant Superintendent  
Equity Coordinator (Students) and  
Title IX Compliance Officer  
Leon County School District  
2757 West Pensacola Street  
Tallahassee, Florida 32304  
(850) 487-7306  
[rodgersk@leonschools.net](mailto:rodgersk@leonschools.net)

Deana McAllister, Labor and Relations  
Equity Coordinator (Employees)  
(850) 487-7207  
[mcallisterd@leonschools.net](mailto:mcallisterd@leonschools.net)

A student or parent alleging discrimination as it relates to Section 504 of the Rehabilitation Act may contact:

Karin Gerold, 504 Specialist  
(850) 487-7160  
[geroldk@leonschools.net](mailto:geroldk@leonschools.net)





*Success for Educators*  
FINANCIAL VALUES FOR SCHOOL BOARD EMPLOYEES

Bringing financial benefits to all teachers and school related employees. Offering exclusive financial benefits, news and events to educators and school related employees all across North Florida and South Georgia. Including private schools.

Each quarter, teachers have the opportunity to apply for one of twelve \$500 Classroom Grants. Grants are awarded based on the use of technology, financial literacy and community service in the classroom. Our online application and more information can be found on the Success for Educators website.

## Classroom Grants



With every swipe of an Envision Debit Card, we donate five cents toward feeding students through backpack programs across North Florida and South Georgia (up to \$17,000 per year). The more members who participate, the more money we raise for our local school district to improve the educational experience of our children and help them become productive citizens in their communities.

Learn more at [www.EnvisionCU.com/SwipeForSchools](http://www.EnvisionCU.com/SwipeForSchools)

Our exclusive Educator Discount Program gives educators the opportunity to receive up to a 1% APR rate discount\* on qualifying loans with auto pay. To receive the Educator Discount, simply visit your local Envision financial center and let us know you're an educator, or apply online and enter the promo code: educator.

## Educator Discounts

\*APR: Annual Percentage Rate. 1% Rate Discount is based on 0.50% educator discount coupled with 0.50% discount for automatic payments. Standard discount for educators is 0.50%. Not all loans are eligible to receive the discount. The following loan types are eligible for the program: auto loans, motorcycle loans, boat loans, RV loans, lifestyle loans, Short Term loans, Fresh Start loans, and Extra Credit loans. Discount does not apply to promotional rates. Cannot be combined with any other promotion or discount. Offer is only valid on new loans and cannot be used to discount current or existing loans. Offer may end at anytime without notice.

Visit [EnvisionCU.com/Educators](http://EnvisionCU.com/Educators) to learn more!

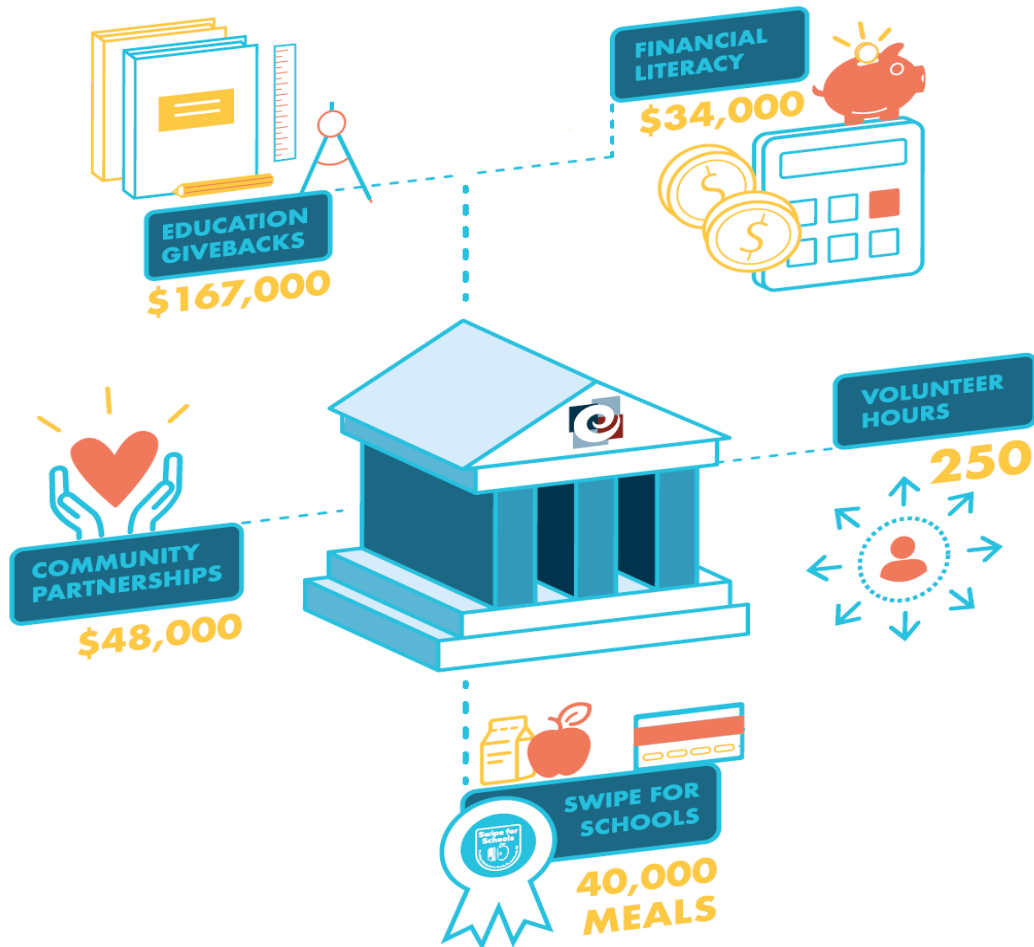


Supporting *Education* Since 1954



**envision**<sup>®</sup>  
credit union

**2019** Community Support  
OUR YEAR IN REVIEW



**Total: \$249,000**  
**Dollars Invested**

WHERE YOU **BANK** MATTERS.